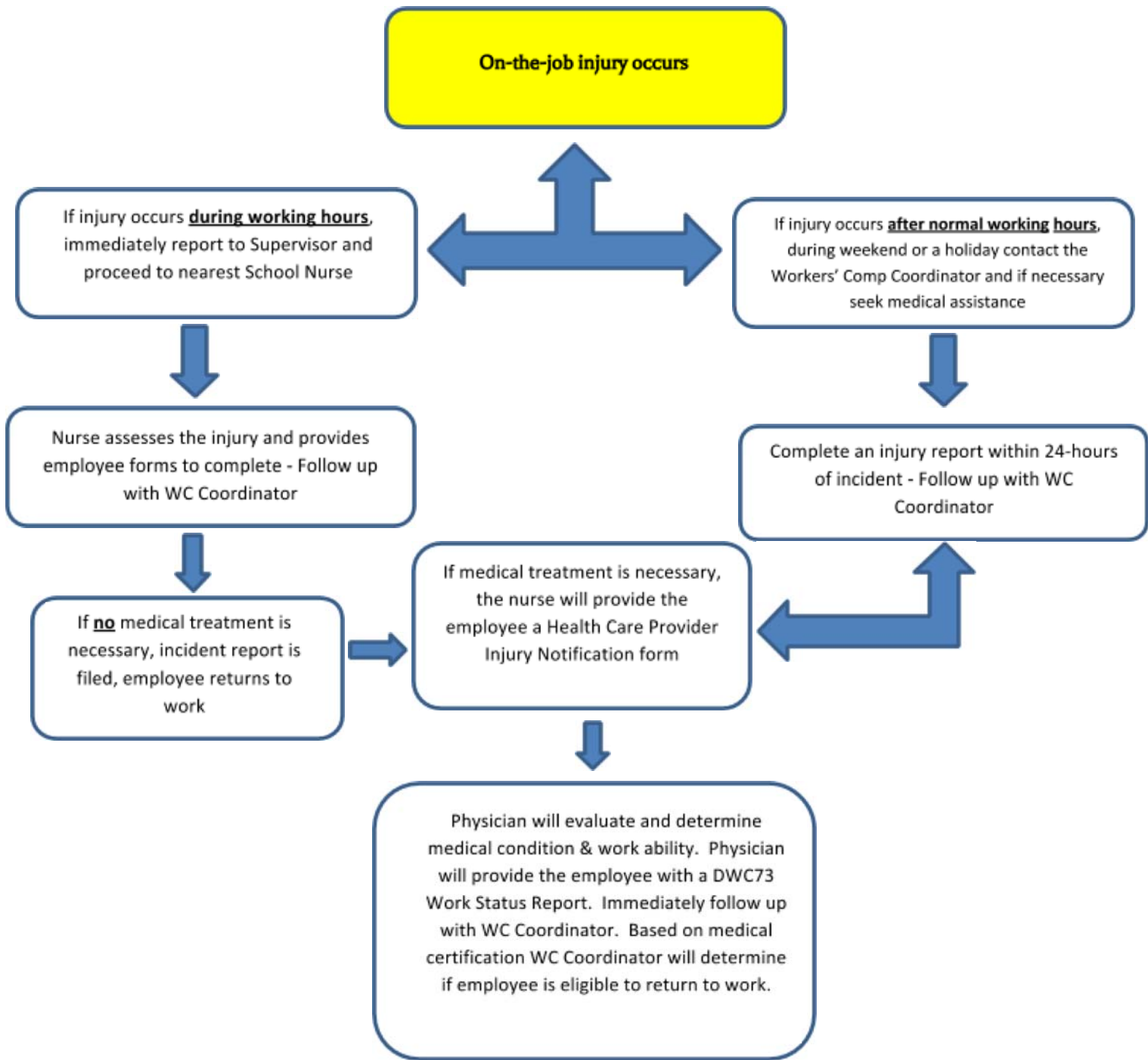




PROCEDURES FOR REPORTING ON-THE-JOB-INJURIES



Remember an employee MUST report to the WC Coordinator prior to reporting to duty if the healthcare physician has changed your ability to work at a full duty basis or lost time is involved.

Jessica Segura
Workers Compensation Compensation
Work- 915-877-7428, Cell- 915-252-3725
jsegura@canutillo-isd.org