



# CISD Facilities Master Plan | Recommendations

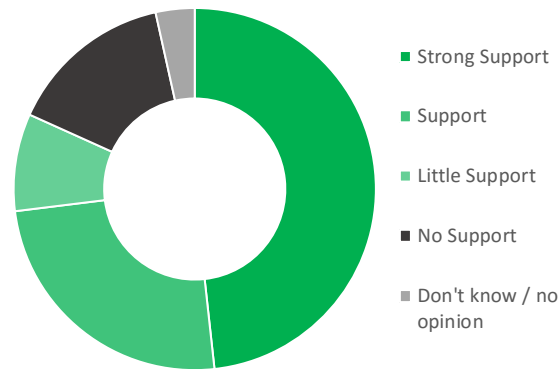
DRAFT

Prepared by  
**DEJONG RICHTER JACOBS**

## Highlights from the 2nd Community Dialogue

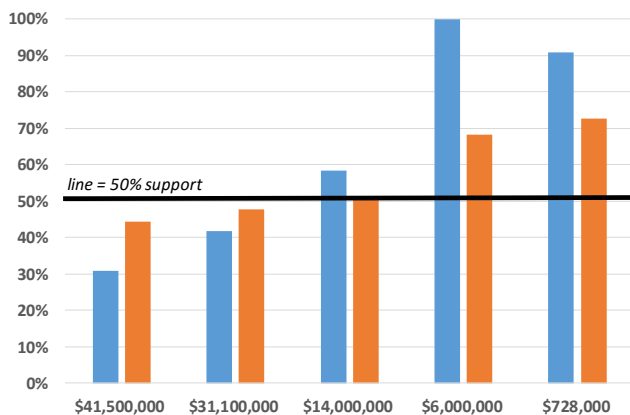
Option	Convert AMS to a 9 <sup>th</sup> grade center & CMS to a 7-8 <sup>th</sup> grade center	Convert both middle schools to a 7-9 <sup>th</sup> grade configuration	Convert CMS to an area K-8	Convert CMS to an area K-8 & JDE to a Skilled Tech Center
Percent Strong Support & Support	57%	59%	27%	20%
Percent #1 Preferred Option	42%	39%	9%	10%

## Selling excess land



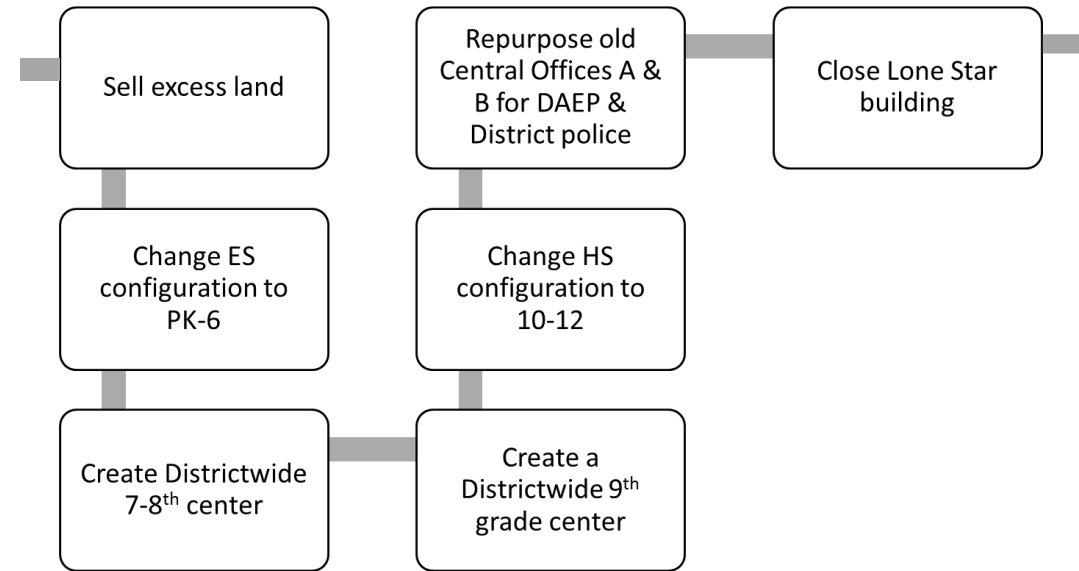
Most respondents supported selling excess land

## Investing in facility repairs

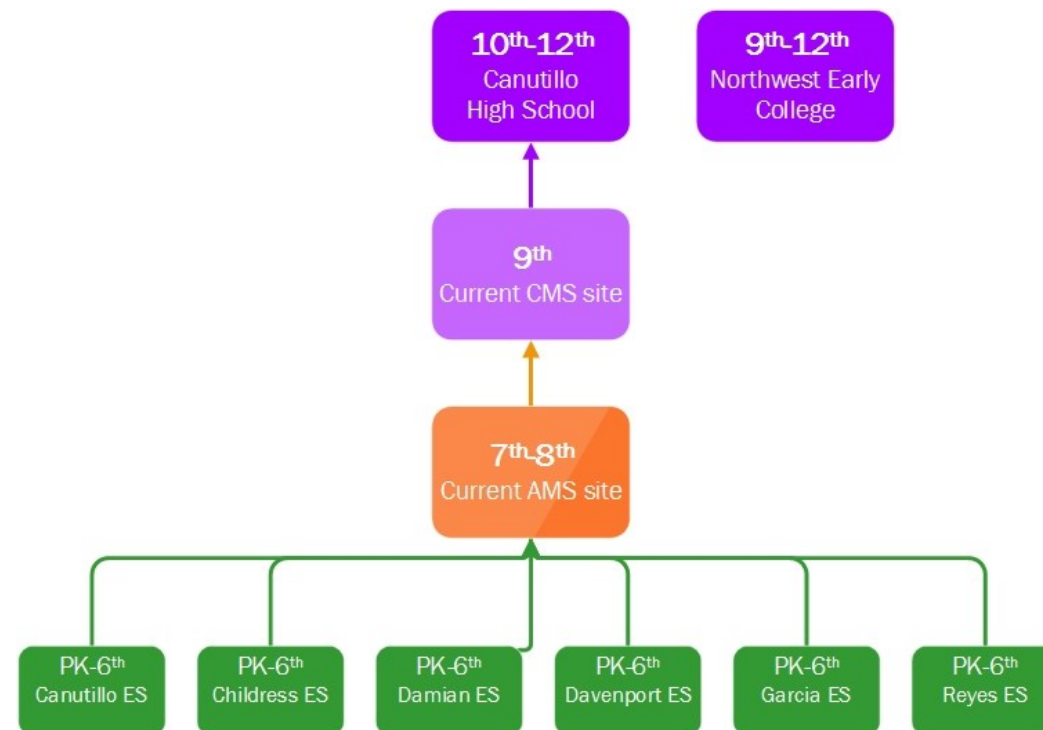


Support for investing in facility repairs surpassed 50% between \$14 million & \$6 million

## Recommendations summary



## Recommended grade configuration change



## Recommendation Details & Benefits

Sell excess land	<ul style="list-style-type: none"> <li>73% CD2 respondents expressed "strong support" or "support" for selling excess land</li> </ul>
Change ES configuration to PK-6	<ul style="list-style-type: none"> <li>Invest in science classrooms for K-6<sup>th</sup> students</li> <li>Invest in elementary fine &amp; performing arts programs (instruments, equipment, and classrooms)</li> <li>Improves ES utilization</li> </ul>
Create Districtwide 7-8 <sup>th</sup> center at AMS	<ul style="list-style-type: none"> <li>Change from original idea CMS as 7-8<sup>th</sup> as AMS recently had ~\$5million in athletics and arts renovations. Students will be here 2x as long as in the 9<sup>th</sup> grade center.</li> </ul>
Create a Districtwide 9 <sup>th</sup> grade center at CMS	<ul style="list-style-type: none"> <li>Frees up space to house most of Student Services with all CISD 9<sup>th</sup> graders. Focus on 9<sup>th</sup> grade success and on-time promotion to 10<sup>th</sup> grade (9<sup>th</sup> grade center was the most popular option according to the second community dialogue results).</li> </ul>
Change HS configuration to 10-12	<ul style="list-style-type: none"> <li>Addresses over-utilization at CHS</li> <li>Frees up space at CHS to house a few classes from NWECHS, addressing NWECHS' over-utilization as well</li> </ul>
Repurpose old Central Offices A & B for DAEP & District police	<ul style="list-style-type: none"> <li>Repurposes vacant buildings for use, allowing Lone Star to be vacated</li> </ul>
Close Lone Star building	<ul style="list-style-type: none"> <li>Prevents need to invest in CISD's worst condition facility (over \$7million in identified need)</li> </ul>

## How were these recommendations decided upon?

The four options in the upper left corner of this page were presented to the Canutillo community for their feedback on March 3, 2016. Full results from this dialogue are available on CISD's website.

Community feedback was taken into consideration on March 17, 2016 when the JACOBS and DeJONG-RICHTER team met with CISD leadership to craft the recommendations outlined above.

The following page details cost estimates for the recommendations.



# CISD Facilities Master Plan | Recommendations

DRAFT

Prepared by  
**DEJONG**  
**RICHTER JACOBS**

## Recommended Cost Estimates

Location	Critical Repairs (Priority 1 & 2 - safety, roofs, electrical, HVAC, plumbing)	Top Technology Needs (Infrastructure, Wifi, Classroom Instruction)	Educational Enhancements	Total Recommended Near Term Investment (Escalated to 2019 Costs)	Project Highlights
Canutillo HS (10-12 Grade)	\$ 450,491	\$ 205,037	\$ -	\$ 655,528	- Classroom Wifi and Multimedia Technology, - Culinary Arts Lab, - Science Labs, - Gym Floor, - Critical Repairs
NW Early College HS	\$ 116,496	\$ 220,756	\$ -	\$ 337,252	- Classroom Wifi and Multimedia Technology - Critical Repairs
Canutillo MS (to become 9th Grade Center)	\$ 1,226,522	\$ 245,780	\$ 750,000	\$ 2,222,302	- Classroom Wifi and Multimedia Technology, - Safety lighting and security improvements, - Gym Bleachers, - Relocate Student Support Services to New 9th Grade Center, - Critical Repairs
Alderete MS (to become 7-8 Grade School)	\$ 617,859	\$ 312,491	\$ -	\$ 930,351	- Classroom Wifi and Multimedia Technology, - Safety lighting, - ADA Accessibility, - Critical Repairs
Canutillo ES	\$ 49,293	\$ 235,343	\$ 536,590	\$ 821,226	- Classroom Wifi and Multimedia Technology, - Science, music, and art upgrades, - Critical Repairs
Davenport ES	\$ 320,978	\$ 184,603	\$ 536,590	\$ 1,042,171	- Classroom Wifi and Multimedia Technology, - Science, music, and art upgrades, - Air Conditioning, - Critical Repairs
Damian ES	\$ 807,825	\$ 99,783	\$ 536,590	\$ 1,444,198	- Classroom Wifi and Multimedia Technology, - Science, music, and art upgrades, - Air Conditioning, Water Lines, Roof - Critical Repairs
Childress ES	\$ 167,710	\$ 127,134	\$ 536,590	\$ 831,434	- Classroom Wifi and Multimedia Technology, - Science, music, and art upgrades, - Air Conditioning, - Critical Repairs
Garcia ES	\$ -	\$ 208,684	\$ 536,590	\$ 745,274	- Classroom Wifi and Multimedia Technology, - Science, music, and art upgrades, - Critical Repairs
Reyes ES	\$ -	\$ -	\$ -	\$ -	- n/a (new school)
Central Office	\$ 172,027	\$ 767,146	\$ 1,000,000	\$ 1,939,173	- Safety lighting and ADA improvements, - Renovate old admin buildings at CMS/9th grade center for DAEP and CISD Police. - Critical Repairs
Lone Star Building	\$ -	\$ -	\$ 350,000	\$ 350,000	- Demolish Lone Star and restore site with historic monument; - Relocate BRAVO Program into Portable Building
Facilities & Transportation	\$ 125,231	\$ -	\$ -	\$ 125,231	- Roof and critical repairs
<b>TOTAL</b>	<b>\$ 4,054,432</b>	<b>\$ 2,606,758</b>	<b>\$ 4,782,950</b>	<b>\$ 11,444,140</b>	

\$4M addresses  
critical  
condition  
needs

\$2.6M  
addresses key  
technology  
needs

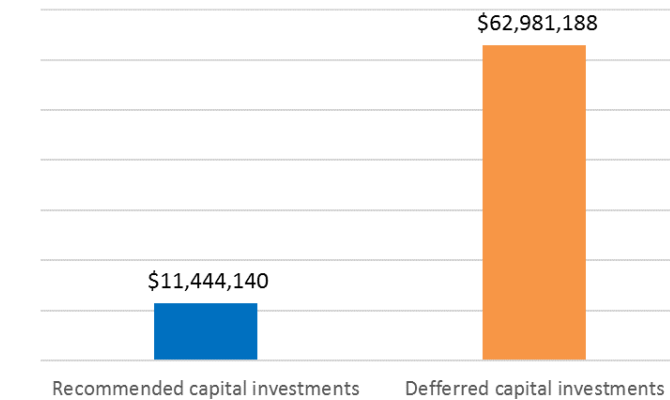
\$4.7M  
improves  
science & arts  
offerings at  
PK6 and  
supports the  
configuration  
changes

\$11.4M equals  
total cost  
estimates

## Steering Committee Meeting #4

Steering Committee members: Please review this packet and provide feedback on two (2) key items.

1. Benefits/Challenges of the recommended configuration changes
2. Your perception of the costs related to all of the recommendations



The recommendations are to **focus on \$11.4 million** of the total identified needs and defer investment in the remaining \$62.9 million in identified needs.

Comments: